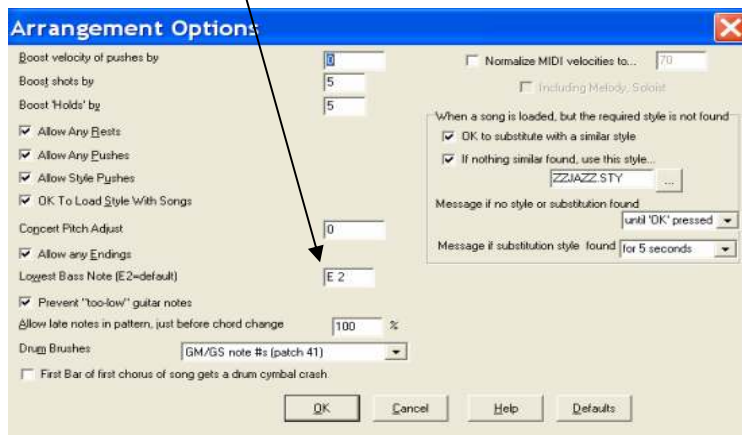
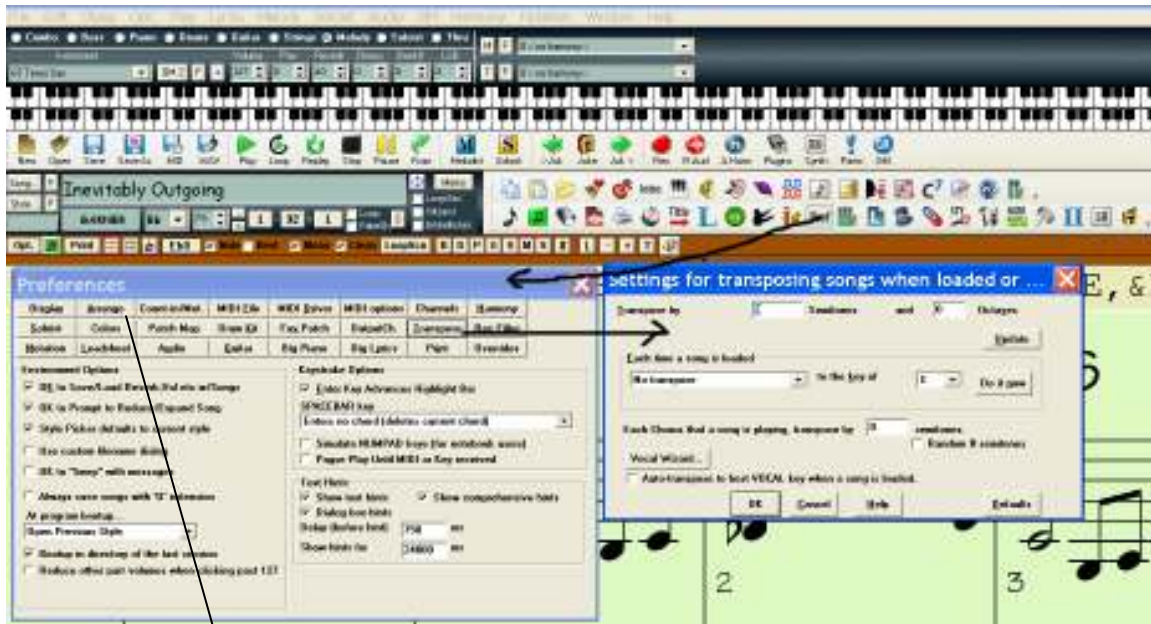


Band-in-a-Box transpose for Saxophone

Version 2006

Tenor sax players and other Bb instruments should set Concert Pitch Adjust to -2
If the notes are too low for tenor sax use +14. If the notes are too high, you can drop an octave by using (-10). Alto Sax and other Eb instruments should set Concert Pitch adjust to +3
Select PREFERENCES (ctrl E), TRANPOSE (shift up T) or ARRANGE (shift up A).

Saxophone	Baritone Eb	Tenor Bb	Alto Eb	Soprano Bb
Transpose	Sounds an octave plus a major 6 th below written pitch.	Sounds a major 9 th below the written pitch	Sounds a major 6 th below written pitch.	Sounds a major 2 nd below the written pitch
	C sounds Eb	C sounds Bb	C sounds Eb	C sounds Bb



TRANSPOSING LIST FOR SAXOPHONE

	PIANO	TENOR	ALTO
	CONCERT	SAX	SAX
	C	Bb	Eb
1	C	D	A
2	C# / Db	D# / Eb	A# / Bb
3	D	E	B
4	D# / Eb	F	C
5	E	F# / Gb	C# / Db
6	F	G	D
7	F# / Gb	G# / Ab	D# / Eb
8	G	A	E
9	G# / Ab	A# / Bb	F
10	A	B	F# / Gb
11	A# / Bb	C	G
12	B	C# / Db	G# / Ab
13	C	D	A

The usual Transpose Options can be found in the top bar. EDIT, TRANPOSE. from- to, transpose down one semitone (ctrl alt 5). Transpose up one semitone (ctrl alt 6). Concert Pitch Adjust is occasionally useful for non-concert instruments such as Saxophone or Trumpet. The output is transposed so that you see the music in one key while it plays in another.
<http://learnsax.co.uk/talk/index.php?topic=31.0>

